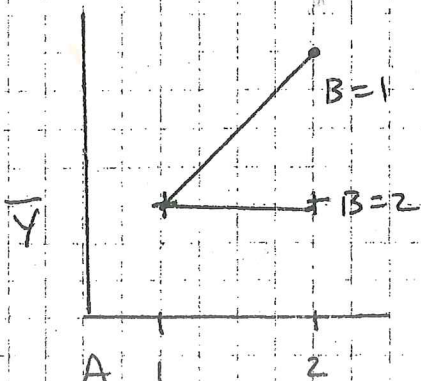
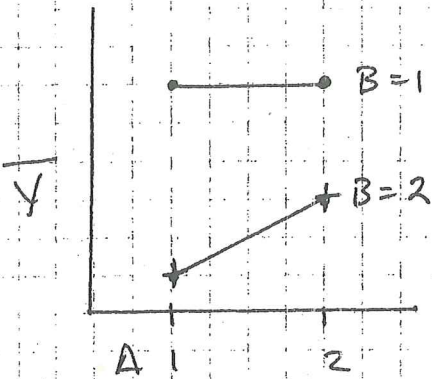
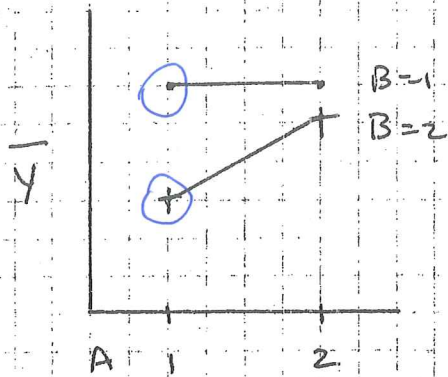
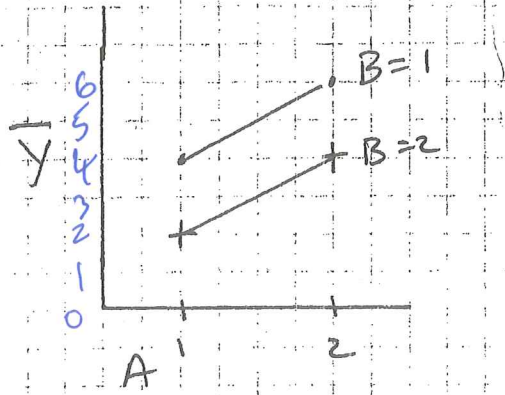
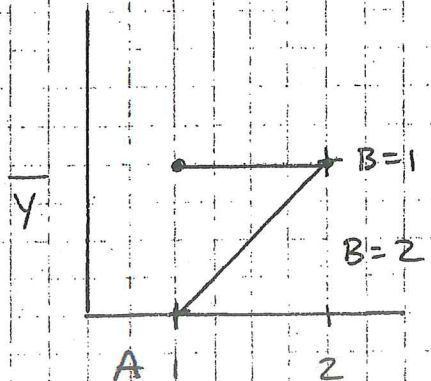
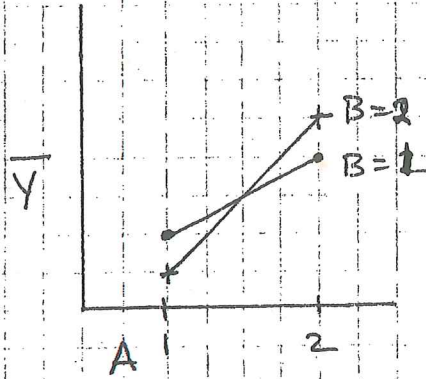
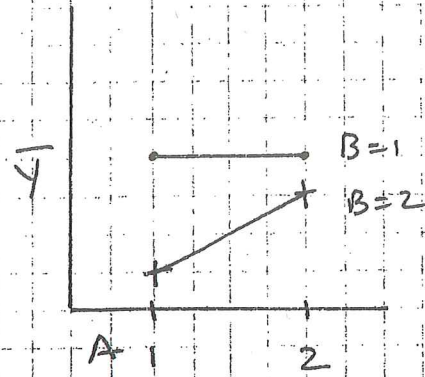
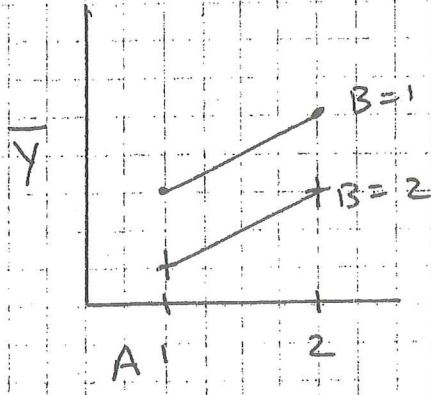


C=1



C=2



No interactions
(2 or 3 way)

A*B interaction
A*C no
B*C no
A*B*C no

A*B interaction
A*C interaction
B*C interaction
A*B*C no

Why?

$$\left(\bar{y}_{111} - \bar{y}_{121} \right) - \left(\bar{y}_{211} - \bar{y}_{221} \right)$$

$$= \left(\bar{y}_{112} - \bar{y}_{122} \right) - \left(\bar{y}_{212} - \bar{y}_{222} \right)$$

$$= 2$$

A*B no
A*C no
B*C no
A*B*C interaction